

CATC Verisys SCSI-Viewä 5.10 Release Notes



GETTING STARTED

1. INTRODUCTION

Welcome and thank you for purchasing CATC Verisys SCSI Analysis Tools. The enclosed SCSI-View v5.10 for the Verisys SV-8320 Ultra320 SCSI bus analyzer fully supports packetized protocol within the Phase and Performance View.

2. SYSTEM REQUIREMENTS

- Microsoft Windows NT4.0 / 2000 / XP
- 4 GB free disk space
- 128 MB RAM
- Super VGA monitor or better

3. CONTENTS OF CD-ROM

- SCSI-View Analyzer Software
- SCSI-View Reader (Demo) Software
- SCSI-View Reference Manual
- Distributable Acrobat Reader
- Release Notes
- Install Diskette Images of SCSI-View for Win NT4.0
- Install Diskette Images of SCSI-View for Win 2000 & Win XP

4. INSTALLATION INSTRUCTIONS

4.1. PROGRAM INSTALLATION

Step 1: Insert CD-ROM. Setup should launch automatically. If not, open the Add/Remove Programs applet from the Control Panel and click on the Add New Programs push button.

Step 2: When the Install SCSI-View button is pressed, the installation program will detect which Windows operating system is running and will load the appropriate installation software. See the readme.txt in the SCSI-View Installation or in the destination directory for the latest Release Notes.

4.2. SCSI-VIEW DRIVER INSTALLATION

Windows 2000 & Windows XP

Step 1: For new installations, when the Verisys PC Card is inserted into a PCMCIA slot or the Verisys PCI Host Adapter is detected, Windows will display a New Hardware Found Dialog.

Step 2: Select the wizard option to "Search for a suitable driver for my device (recommended)". Put a check mark in the box next to "Specify a location".

Step 3: Insert the SCSI-View CD-ROM into its drive – setup should launch automatically. Wait for the Installation Menu screen to appear. Cancel out of the CD-ROM Installation Menu. When the wizard prompts for an installation directory enter:

- **D:** \swin2k where D: represents the CD-ROM drive letter.

Then press the OK button.

Windows NT 4.0

For Windows NT4.0, driver installation is achieved via installation of SCSI-View software.

4.3. CHECK FOR PROPER HARDWARE INSTALLATION

For Windows 2000:

Step 1: Select Start, Settings, Control Panel.

Step 2: In the Control Panel, select System, then Hardware Tab, and then Device Manager. You should see device list with an entry for a PC Card / PCI Bus Analyzer preceded by an adapter card icon. Below this device, you should see an entry for either "VERISYS_Inc. SCSI-View_PCPCIA" or "Verisys, Inc. PCI_Board" preceded by an adapter card icon.

Step 3: If an exclamation point, red "X", or question mark appears on the icon, pick Action, Properties on the selected device to troubleshoot the problem.

Please refer to the online help and SCSI View 5.1 Reference Manual (provided in PDF format on installation CD) for detailed instructions on the operation of CATC Verisys SCSI Analysis Tools.

5. FEATURE SUMMARY

This release provides a number of new features for dealing with Information Unit (IU) / Packetized Protocol. The most significant features are a modified session file format that includes both IU packets as phase change events, and substantial changes to the hardware FPGA that improves capture reliability and provides filtering of data packet data. Based on this modified session file, all of the Phase View, Command View, and Performance View features will now fully support IU packets and U320 protocol.

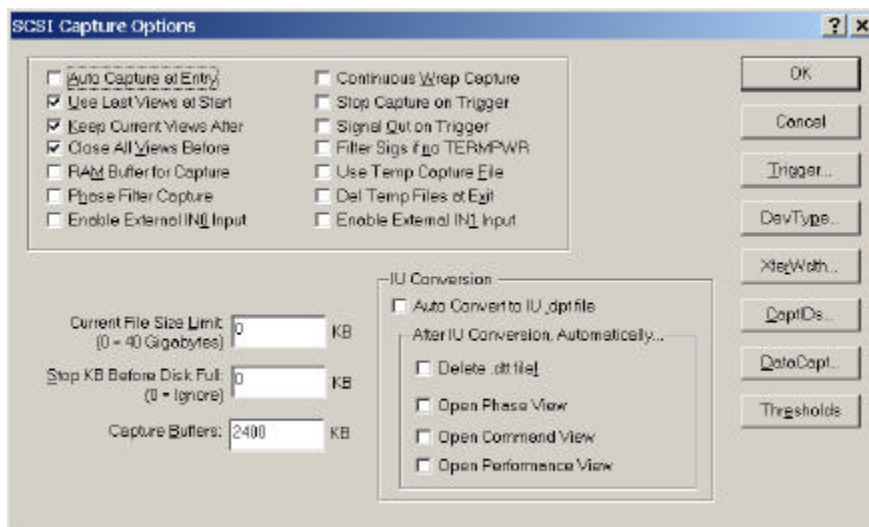
6. NEW FUNCTIONALITY

6.1. SESSION FILE CONVERSION

A session file conversion utility converts existing session files into a new format that recognizes IU packets in the same way that SCSI phases are recognized.

The old session file is converted to a file with the same name but with a “.DPT” extension.

This step can optionally be done automatically at the completion of upload (see Capture Options dialog):



6.2. NORMAL MODE & PACKETIZED PROTOCOL

This release contains many improvements to stabilize the functionality while recording SCSI 320 packetized protocol in the normal mode. Truncation of IU data payloads is now support during normal mode recording. This allows continuous recording to disk with higher utilization on the SCSI bus.

The command view is now available when recording packetized protocol.

7.0. KNOWN ISSUES

Known issues within the 5.10 build 39 release:

General Operational Issues

- When using the analyzer connected through PCMCIA card without an external power source, the recordings may fail unexpectedly. Workaround is to install the external power source.
- When using the analyzer connected through PCI and with simultaneous PCI-based network activity the Windows PC may 'blue screen'. Workaround is to remove the network card.

Recording Issues with Packetized SCSI 320

- The only record triggers available in packetized SCSI are BusReset, External, or Keyboard.
- Bit to bit de-skew is not automatically accounted for in the 320 SCSI analyzer.
- Filtering Invalid Data is not functional and disabled.
- The Data Window has been seen to cause crashes and show corrupt data on some computers.
- The command view often misses the amount of data written.

8.0 CONTACTING CATC

Computer Access Technology Corporation
3385 Scott Blvd.
Santa Clara, CA 95054

Sales:

(800)909-7211
(408)653-1262

Technical Services:

(800)909-7112
(408)653-1260
Fax: (408)727-6622

Email: support@catc.com
Web: <http://www.catc.com/>